

Jennifer Trant
Executive Director
jtrant@amico.net

David Bearman
Director, Strategy & Research
dbear@amico.net

AMICO Members
Susan Chun, Robin Dowden
Ken Hamma, Doug Hiwiler

- **Panel Discussion of Members**

What is AMICO?

- consortium of 26 institutions with collections of art
- independent, non-profit, membership organization
- **Mission: enable educational access to multimedia documentation of art**

Why AMICO?

- **improve access to multimedia documentation**
- **create a joint Library for educational use**
 - universities and colleges
 - museums
 - primary and secondary education
 - public libraries

Founding Members

- | | |
|---|--|
| – Albright-Knox Art Gallery | – The Metropolitan Museum of Art |
| – Art Gallery of Ontario | – Minneapolis Institute of Arts |
| – Art Institute of Chicago | – Museum of Contemporary Art |
| – Asia Society Gallery | – Montreal Museum of Fine Arts |
| – Center for Creative Photography | – Musée d'art contemporain de Montréal |
| – Cleveland Museum of Art | – Museum of Fine Arts, Boston |
| – Davis Museum and Cultural Center, Wellesley College | – National Gallery of Canada |
| – Fine Arts Museum of San Francisco | – National Museum of American Art |
| – International Museum of Photography, George Eastman House | – Philadelphia Museum of Art |
| – J. Paul Getty Museum | – San Francisco Museum of Modern Art |
| – Los Angeles County Museum of Art | – San Jose Museum of Art, |
| | – Walker Art Center |

New Members

- **September 1998**
 - The Frick Collection (including the Art Reference Library)
 - The Library of Congress
 - Whitney Museum of American Art
- **Membership Open**
 - Information package at <http://www.amico.net/>

- **Chairman**
 - Harry S. Parker III, Director, Fine Arts Museum of San Francisco
- **Vice-Chairman**
 - Robert P. Bergman, Cleveland Museum of Art
- **Secretary**
 - Malcolm R. Rogers, Boston Museum of Fine Art
- **Treasurer**
 - Maxwell L. Anderson, Whitney Museum of American Art

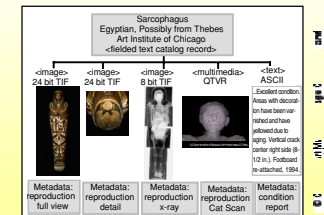
- **Recruiting for Member and Client Services Coordinator**
 - Provide Member Services
 - Staff Committees
 - Users and Uses, Technical Operations and Rights Committees

AMICO Membership

- **Benefits**
 - access to the Library
 - member services
 - increased educational use of collection
- **Responsibilities**
 - annual contributions to Library
 - membership fee

AMICO Library

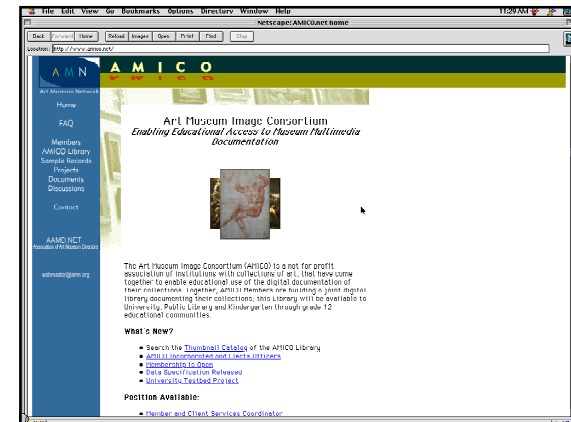
Art Museum Image Consortium (AMICO)
Documentation of a Work in the AMICO Library

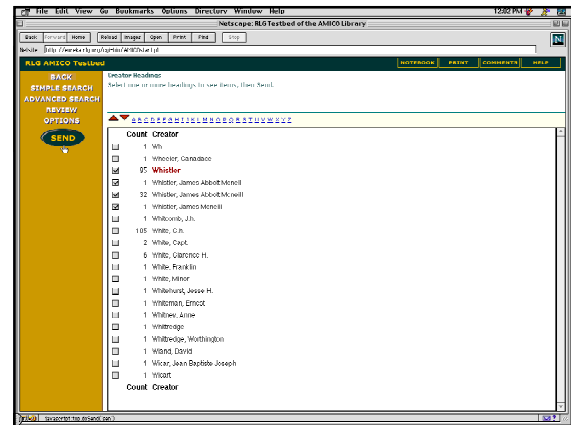
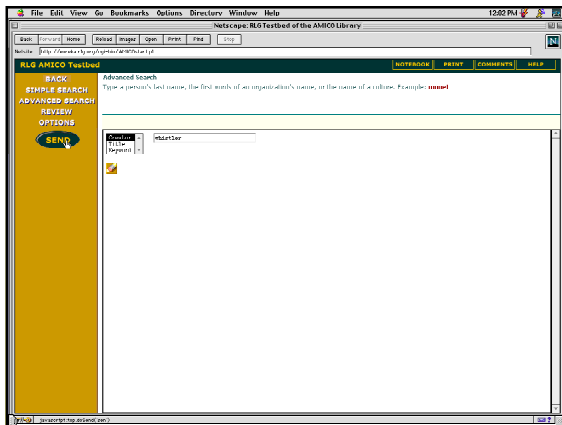
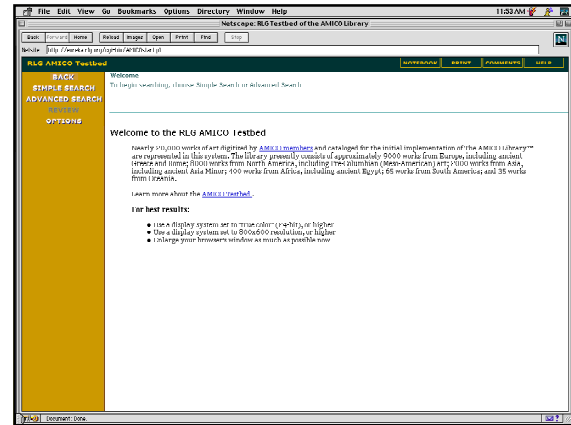
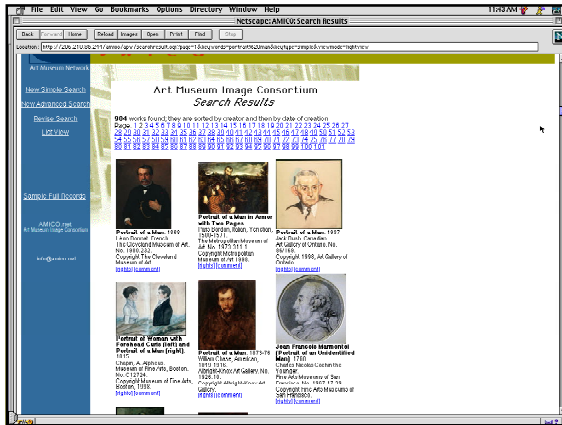
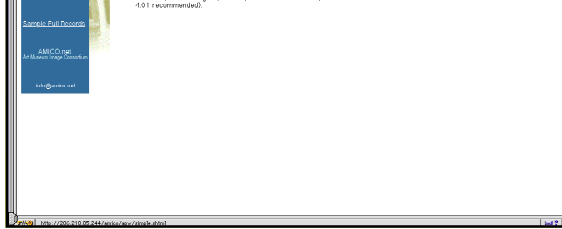


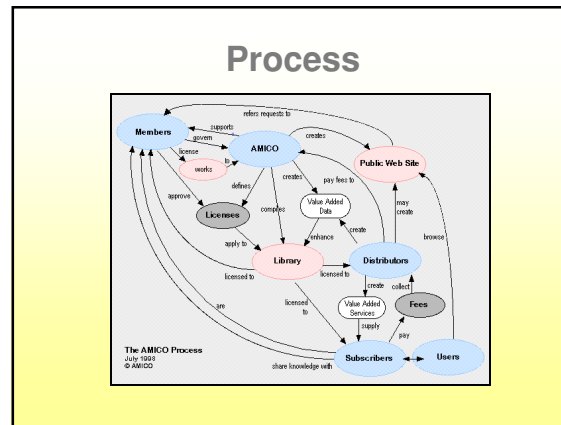
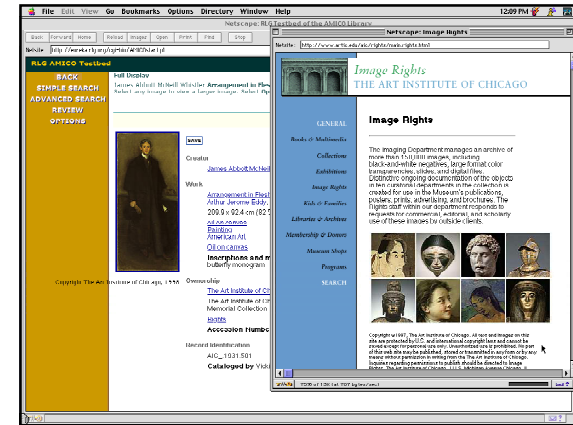
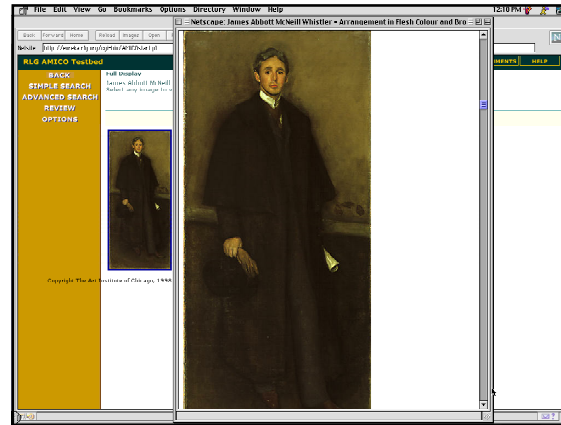
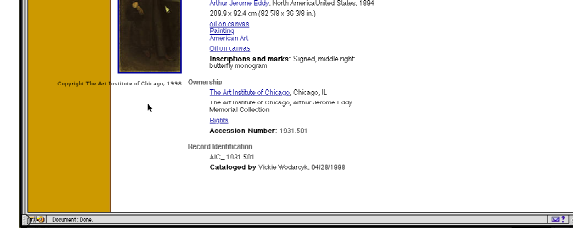
Each work in the AMICO Library is documented by a catalog record, an image file, and an image metadata record. Additional media files each have a metadata record.

Access

- different Distributors for different markets
- university access provided by Research Libraries Group (RLG)
- public access to Thumbnail Catalog on web
- discussions with States, Other Distributors to serve Public Library and K-12 Education





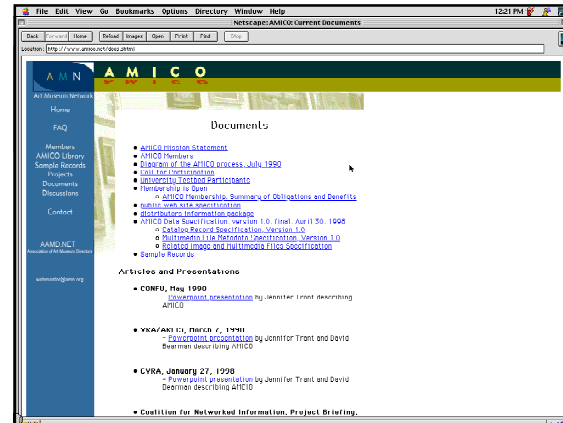


- ### Schedule
- higher education
 - 1998/99 academic year University Testbed Project
 - 1999/2000 any subscribing higher educational institution
 - projects pending in K-12 and Public Library

- includes license to library
- **Subscription fee**
 - has license and distribution components
 - based on number of users

<http://www.amico.net>

info@amico.net



AMICO Members Panel

- Robin Dowden, Walker Art Center
- Susan Chun, Metropolitan Museum of Art
- Ken Hamma, J. Paul Getty Museum
- Doug Hiwiler, Cleveland Museum of Art